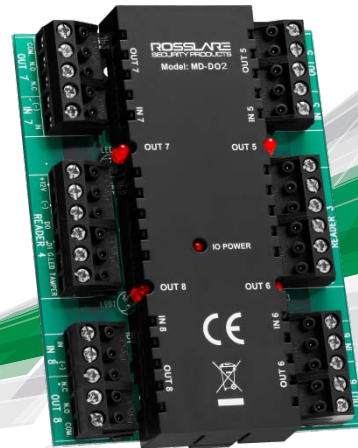


# MD-D02

## 2 Reader Expansion Board



### 10ACRL-MDD02



ROSSLARE'S MD-D02 2 READER EXPANSION BOARD IS PART OF A HIGHLY ADVANCED LINE OF EXPANSION MODULES THAT WORK SEAMLESSLY WITH ROSSLARE'S STATE-OF-THE-ART AC-225 AND AC-525 NETWORKED ACCESS CONTROLLERS. IDEAL FOR RESIDENTIAL AND COMMERCIAL APPLICATIONS, THE MD-D02 EXPANSION BOARD PACKS FEATURES SUCH AS ADVANCED COMMUNICATION WITH THE CONTROLLER. THE MD-D02 EXPANSION INCREASES FLEXIBILITY TO THE ACCESS CONTROL SYSTEM BY ADDING TWO READERS, TWO DOORS, FOUR RELAY OUTPUTS AND FOUR SUPERVISED INPUTS TO THE CONTROLLER.

### GENERAL DESCRIPTION

Rosslare's MD-D02 2 Reader expansion board is designed with a focus on high quality and reliability and is ideal for residential and commercial applications.

Easy to install and operate, the MD-D02 expansion board features state-of-the-art supervised communications with the controller.

The expansion board adds two additional readers or keypad inputs; four relay outputs and four supervised inputs to the access control panel. As a result, an access control panel with the MD-D02 expansion board can support a total of four readers and four doors. In addition, it is possible to add any keypad or biometric reader that supports the Wiegand, Clock-and-Data or any other format supported by Rosslare's AS-525 AxTrax Software transmission formats.

The host access controller has complete control over the additional readers, inputs and outputs of the MD-D02 expansion board.

### MAIN FEATURES

- Additional two proximity readers or keypads
- Four relay outputs and four supervised inputs to the access control panel
- Wiegand or Clock-and-Data transmission keypad or biometric reader compatibility
- LED status feedback for 12V power and relay activation
- Cost effective and modular installation
- Compatible with Rosslare's AC-225 and AC-525 networked access controllers
- Input and output configurability using Rosslare's AS-525 AxTrax software
- Backed by Rosslare's International Guarantee and service with ISO9001 (Certified TUV Rhineland) level business and manufacturing operations



### ITALIAN DISTRIBUTOR

Largo I Maggio, 8 - 52100 Arezzo (AR) - Italy  
[www.controlloaccessifacile.com](http://www.controlloaccessifacile.com)  
[info@controlloaccessifacile.com](mailto:info@controlloaccessifacile.com)

**ROSSLARE**  
SECURITY PRODUCTS

# SPECIFICATIONS

## ELECTRICAL SPECIFICATIONS

■ Input Voltage	12V DC from host controller
■ Input Current (not including devices)	Standby: 30mA Maximum: 135mA
■ Number of Reader Ports	2
■ Number of Inputs	4
■ Output Relays	4 x 5A with N.O., N.C. and COM contacts Form-C Relays
■ Inputs Voltage	5V DC maximum voltage

## INPUT SPECIFICATIONS

■ Input Type	Selectable: Normally Open, Normally Closed, Supervised with one resistor (three states, normally open or normally closed), Supervised with two resistors (four states, Normally Open or Normally Closed)
--------------	--

## READER SPECIFICATIONS

■ Reader Output Voltage	12V DC
■ Maximum Reader Current	300 mA
■ LED Control Output	Open collector, active low
■ Tamper Input	5V DC maximum voltage
■ Supported Formats	Various, please refer to the AxTrax SW manual

## LED INDICATORS

■ Power LED:	Active when connected to a power source
■ Output LEDs	Four LEDs; Each output LED is active when an output relay is activated and N.O. to COM contacts are shorted

## PHYSICAL SPECIFICATIONS

■ Dimensions (L x W x H)	100 x 75.9 x 32.5 mm (3.93 x 2.98 x 1.28 inch)
■ Weight:	98.2 g (0.21 lbs)

## SYSTEM COMPONENTS

The MD-D02 is compatible with a variety of Rosslare's single/double/multi door controllers (AC-225, AC-525), any keypad or biometric reader that supports the Wiegand or Clock-and-Data transmission formats, as well as with many third party access control units.

## PRODUCT WARRANTY

5-year Limited Product Warranty

## ABOUT ROSSLARE SECURITY

Rosslare Security Products, a division of Rosslare Enterprises Ltd. manufactures high-quality security products since 1980. The company's three main lines: Access Control, Intrusion Detection and Guard Patrol, together with a growing product range have transformed Rosslare Security into a major worldwide force in security. Rosslare holds itself to the highest standards of customer service and manufacturing (ISO 9001:2008, ISO 14001:2004, ISO 13485:2003). The company complies with the EU Directive 2002/95/EC on Restriction of Hazardous Substances (RoHS).

Visit our web site: [www.rosslaresecurity.com](http://www.rosslaresecurity.com)

AxTrax™ is a trademark of Rosslare Enterprises Ltd.



5504-0112101-01  
Copyright © Rosslare 2011



**ROSSLARE**  
SECURITY PRODUCTS  
Create your own peace of mind.